

UN220A5-EU Specifications



STANDARD FEATURES

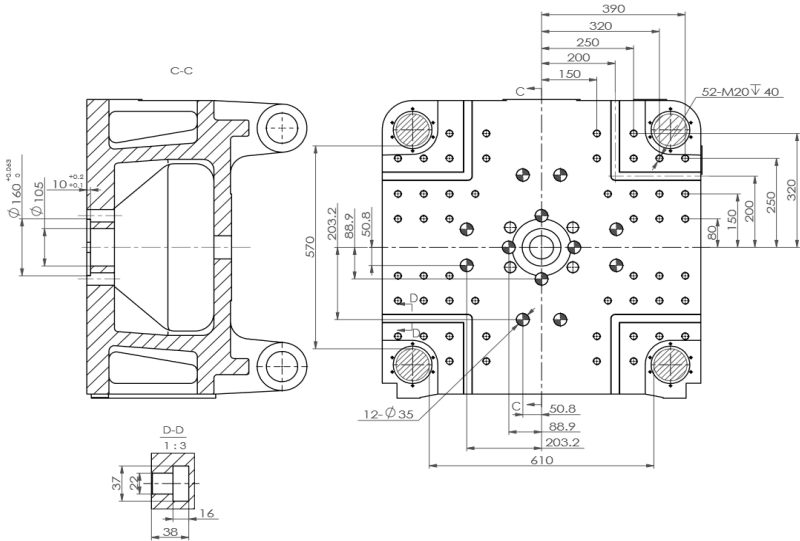
- World famous Austrian made KEBA 1175 Microprocessor control
- Control of oil temperature from the Keba controller
- Oil level monitoring
- Injection hold changeover by time, distance or pressure
- Control of barrel throat temperature via the Keba controller
- Semi-auto start button on a flying lead with magnetic base
- European linear transducers, seals, valves & switchgear
- Caterpillar cooling water supply
- Socket & dummy plug for dosing signal
- Bypass oil filtration
- Back pressure controlled by proportional valve
- Water manifold with 6 circuits
- 2 x air-blast circuits fitted with pneumatic valves fitted
- Double core pull
- Euromap 67 interface
- 2 x UK style 13 amp sockets
- Industry 4.0 ready
- Ejector safety circuit
- Oil preheating circuit
- Servo motor energy saving pump system
- CE certification
- Anti-vibration mounts
- Spares package
- Tool kit & mould clamps
- 3 x auxiliary three phase sockets

OPTIONAL FEATURES

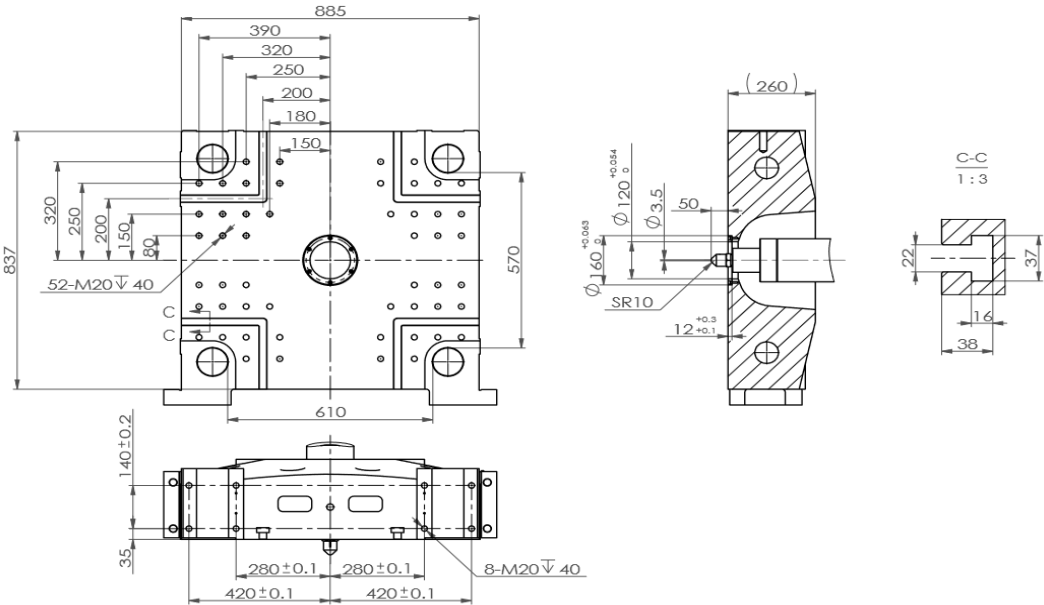
- Increased clamping force
- Increased / Decreased mould height
- Hydraulic or pneumatic valve gate control
- Integral hot runner control
- Bi-metallic plasticising units
- Infrared heater bands
- Electric screw drive (220t - 700t)
- Screw designs for PET, PA, PC, PMMA, TPU, UPVC.
- Accumulator injection
- Liquid silicone rubber conversion
- Robots & Ancillaries

INJECTION UNIT		604/2200			895/2200			1269/2200		
		A	B	C	A	B	C	A	B	C
Screw diameter	mm	43	48	53	48	53	60	53	60	68
Shot volume	cm ³	298	371	452	425	518	664	584	749	962
Shot weight (PS)	g	274	341	416	391	477	611	538	689	885
Injection pressure	bar	2030	1630	1340	2110	1730	1350	2170	1690	1320
Screw L:D ratio		22.3:1	20:1	20:1	22:1	20:1	20:1	22.6:1	20:1	20:1
Injection rate	g/s	170.6	212.6	259.2	164.3	200.3	256.8	159.5	204.5	262.6
Max. injection speed	mm/s		128			99			79	
Screw stroke	mm		205			235			265	
Screw speed (stepless)	r/min		0 - 230			0 - 200			0 - 161	
CLAMPING UNIT										
Clamping force	kN					2200 (2600)				
Platen size	mm					865 x 825				
Distance between tie-bars	mm					610 x 570				
Mould thickness (min-max)	mm					195 - 610				
Opening stroke	mm					530				
Max. daylight	mm					1140				
Ejector force	kN					77				
Ejector stroke	mm					160				
Ejector number	PCS					13				
ELECTRICAL & HYDRAULIC UNITS										
Hydraulic system pressure	MPa					17.5				
Oil pump motor	kW					30				
Heating capacity	kW		10.9 / 10.9 / 12.1			14.4 / 14.4 / 16.8			16.6 / 16.6 / 19	
Number of temp control zones			4			5			5	
GENERAL										
Dry cycle time	s					2.8				
Oil tank capacity	L					420				
Machine dimensions (LxWxH)	mm					6420 x 2040 x 2440				
Max. mould weight - moving	kg					1440				
Max. mould weight - fixed	kg					720				
Machine weight	kg		8250			8350			8500	

MOVING PLATEN DRAWINGS



FIXED PLATEN DRAWINGS



MACHINE DIMENSIONS

