

UN350A6-EU Specifications

STANDARD FEATURES

- › Latest generation energy efficient servo system
- › Energy recovery/regeneration technology
- › World famous Austrian made KEBA i2985 Microprocessor control
- › Bi-metallic plasticising unit
- › Double core pull
- › Euromap 67 robot interface
- › Remote access support
- › Electric screw drive
- › 'Intelligent' management of mould opening, clamp force and energy usage
- › Maintenance monitoring
- › Control of oil temperature from the Keba controller
- › Oil level monitoring
- › Injection hold changeover by time, distance or pressure
- › Control of barrel throat temperature via the Keba controller
- › Semi-auto start button on a flying

- lead with magnetic base
- › European linear transducers, seals, valves & switchgear
- › Caterpillar cooling water supply to moving platen
- › Socket & dummy plug for dosing signal
- › Bypass oil filtration
- › Back pressure controlled by proportional valve
- › Water manifold with 6 circuits
- › 2 x air-blast circuits fitted with pneumatic valves fitted
- › 2 x UK style 13 amp sockets
- › Industry 4.0 ready
- › Ejector safety circuit
- › Oil preheating circuit
- › CE certification
- › Anti-vibration mounts
- › Spares package
- › Tool kit & mould clamps
- › 3 x auxillary three phase sockets.

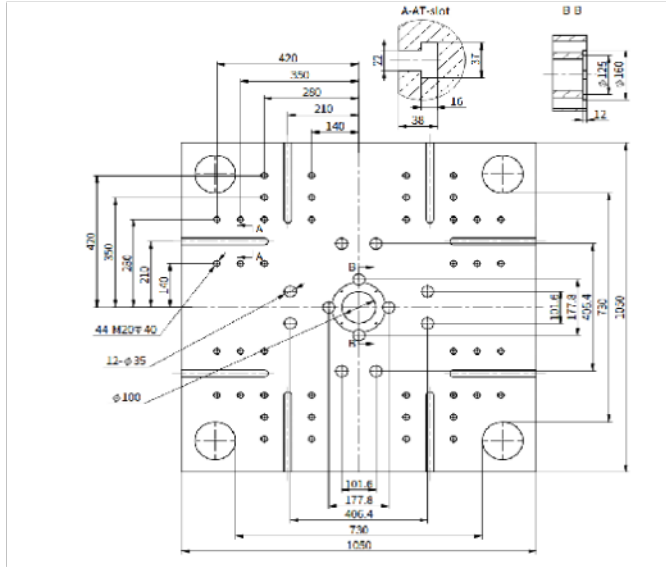


› OPTIONAL FEATURES

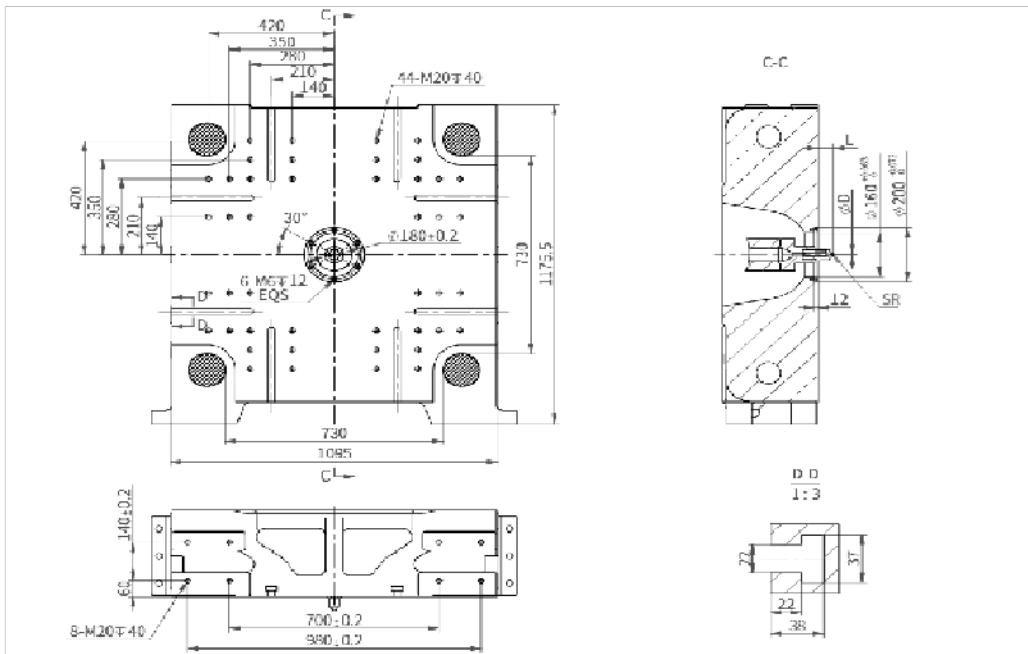
- › Increased clamping force
- › Increased / Decreased mould height
- › Hydraulic or pneumatic valve gate control
- › Integral hot runner control
- › Infrared heater bands
- › Hydraulic screw drive
- › Screw designs for PET, PA, PC, PMMA, TPU, UPVC.
- › Accumulator injection
- › Liquid silicone rubber conversion
- › Robots & Ancillaries

INJECTION UNIT		1340/3500			1995/3500			2845/3500		
		A	B	C	A	B	C	A	B	C
Screw diameter	mm	53	60	68	60	68	76	68	76	84
Shot volume	cm ³	585	749	962	834	1071	1338	1198	1497	1829
Shot weight (PS)	g	538	689	885	767	986	1231	1103	1377	1682
Injection pressure	MPa	230	179	139	239	186	149	238	190	156
Screw L:D ratio		22.6:1	20:1	20:1	22.6:1	20:1	20:1	22.3:1	20:1	20:1
Injection rate	g/s	308.8	395.8	508.3	296.3	380.6	475.4	298.2	372.5	455.1
Max. injection speed	mm/s		152			114			89	
Screw stroke	mm		265			295			330	
Screw speed (stepless)	r/min		0 - 240			0 - 220			0 - 200	
CLAMPING UNIT										
Clamping force (max)	kN	3500 (4000)								
Platen size	mm	1050 x 1050								
Distance between tie-bars	mm	730 x 730								
Mould thickness (min-max)	mm	240 - 730								
Opening stroke	mm	700								
Max. daylight	mm	1430								
Ejector force	kN	118								
Ejector stroke	mm	210								
Ejector number	PCS	13								
ELECTRICAL & HYDRAULIC UNITS										
Hydraulic system pressure	MPa	18.5								
Oil pump motor	kW	66								
Heating capacity	kW	16.7 / 16.7 / 19			25.3 / 25.3 / 25.3			26.9 / 26.9 / 30.9		
Plasticising motor power	kW	28.3			39.3			57.8		
Number of temp control zones	kW	6 / 5 / 6			6			7		
GENERAL										
Dry cycle time	s	4								
Oil tank capacity	L	570								
Machine dimensions (LxWxH)	mm	7840 x 2240 x 2370								
Max. mould weight - moving	kg	2327								
Max. mould weight - fixed	kg	1163								
Machine weight	kg	15400			15700			16000		

MOVING PLATEN DRAWINGS



FIXED PLATEN DRAWINGS



MACHINE DIMENSIONS

